



Think Ergonomics



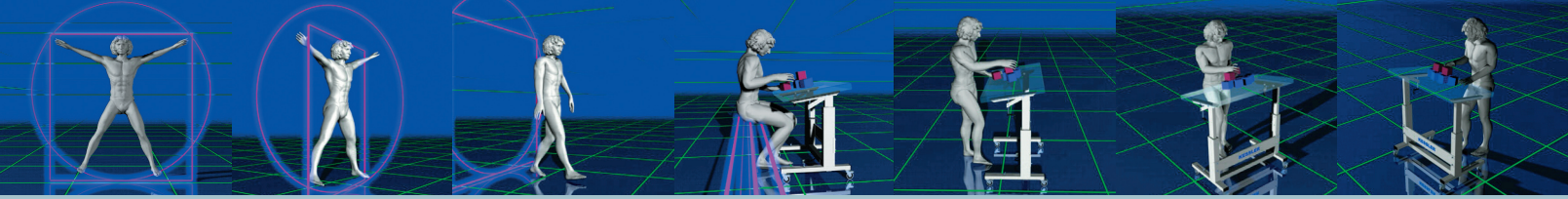
KES 2000

ergonomic ♦ innovative ♦ electrical

- ♦ Future oriented top-of-the-line model
- ♦ The ideal sit-down/stand-up workstation
- ♦ Electrical adjustment by pressing a button
- ♦ 10,000 times proven quality
- ♦ Well designed modular system for many different versions



Electrically height adjustable ergo stand, model „KES-2000-VTH-R075“.
Sit-down/stand-up workstation with thread protected, 360° lockable casters.
Table top supports, tiltable with hand crank, version „VTH“.



HIGHLIGHTS

- ♦ Versatile, variable options for use: e.g. sewing workstation, table for assembly, packing, spreading.
- ♦ Heavy duty steel design for ultimate stability.
- ♦ Precise height adjustment, due to special plastic guides.
- ♦ Continuous tests of over 10,000 trouble-free up and down movements.
- ♦ Maintenance-free.
- ♦ Stand can be completely disassembled for small transport and storage volume.
- ♦ Quick and easy assembly.
- ♦ Special models for handling large pieces: e.g. L-shaped tables with 3 legs or U-shaped tables with 4 legs.
- ♦ Table top supports are 100% parallel, due to mechanical connection.
- ♦ Big accessory package for expanding the modular system: e.g. attachable leg extension, or retrofitting tilt plates.
- ♦ Can be shipped via parcel services.

CE



ON REQUEST

- ♦ Special heights.
- ♦ Special lengths.
- ♦ Other colors.
- ♦ Table tops for all machine types and classes.
- ♦ Sewing motors.



Table top support, not tiltable = basic version.

TECHNICAL DATA

- ♦ Lift range on glides: 685 mm (approx. 27 in.) to 1085 mm (approx. 43 in.), without table top (add 40 mm approx. 1.5 in. for VT version).
- ♦ Lift range on casters R075: 765 mm (approx. 30 in.) to 1165 mm (approx. 46 in.), without table top (add 40 mm approx. 1.5 in. for VT version).
- ♦ Height: 400 mm (approx. 16 in.).
- ♦ Load capacity: Max. 200 kg (approx. 440 lbs.).
- ♦ Lift speed: Approx. 14 mm (approx. 0.6 in.) per second.
- ♦ Standard width: 600 mm (approx. 24 in.) | 1,000 mm (approx. 40 in.).
800 mm (approx. 31 in.) | 1,200 mm (approx. 47 in.).
- ♦ Standard depth: Base 660 mm (approx. 26 in.).
Top 480 mm (approx. 19 in.).
Base 760 mm (approx. 30 in.).
Top 580 mm (approx. 23 in.).
- ♦ Nominal Voltage: Standard 230 V / 50 cycles,
US-Version 220 V / 60 cycles,
or 110 V / 60 cycles.
- ♦ Surface: Powder coated in RAL 9002 grey-white.
- ♦ Weight: Approx. 40 kg (approx. 88 lbs.) per stand.
- ♦ Packaging: 1 per unit = 2 boxes.

OPTIONAL

- ♦ Table top support: Tiltable version „VT“ +/- 10° (can be retrofitted).
Version „VTH“ +/- 15°, horizontally adjustable.
- ♦ Casters: Caster diameter 100 mm (4 in.).
- ♦ Rollen: Twin casters 50 mm (2 in.), 75 mm (3 in.), or 100 mm (4 in.) diameter.
All casters 360° lockable and thread protected.

Please place extra order for treadles/drawers and other accessories.

Request our CD ROM. It contains a lot of information about KESSLER as well as a detailed product catalog with all options.



Table top support, tiltable = version „VT“ (can be retrofitted to basic version).

For table top 480 mm (approx. 19 in.) Art. No.: 11-00505.
For table top 580 mm (approx. 23 in.) Art. No.: 11-00506.



KESSLER GmbH
Industriegebiet, Auweg 10
D-72362 Nusplingen
Telefon: +49 74 29 / 93 19-0
Telefax: +49 74 29 / 93 19-10
www.kessler-ergo.com
info@kessler-ergo.com